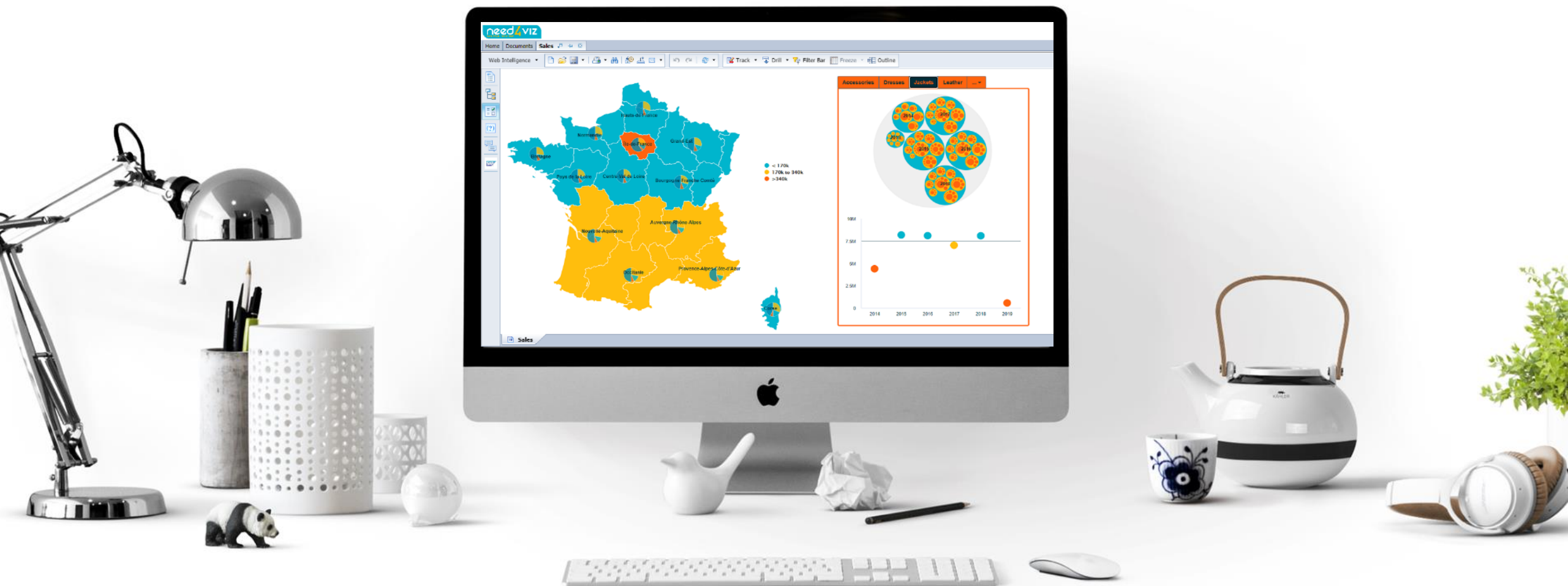




Major Release **2021.9.3**

What's new ?

Fast**&**4You

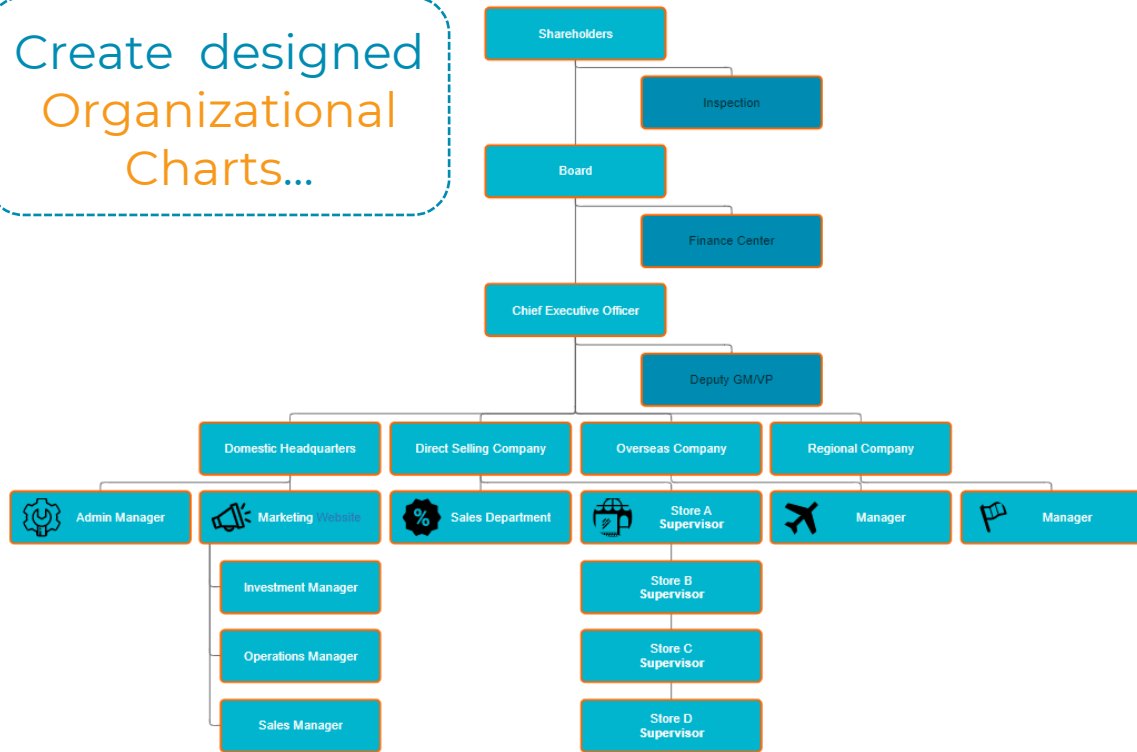


Find here some main **new features** of this release...  
The full release note is available [HERE](#)

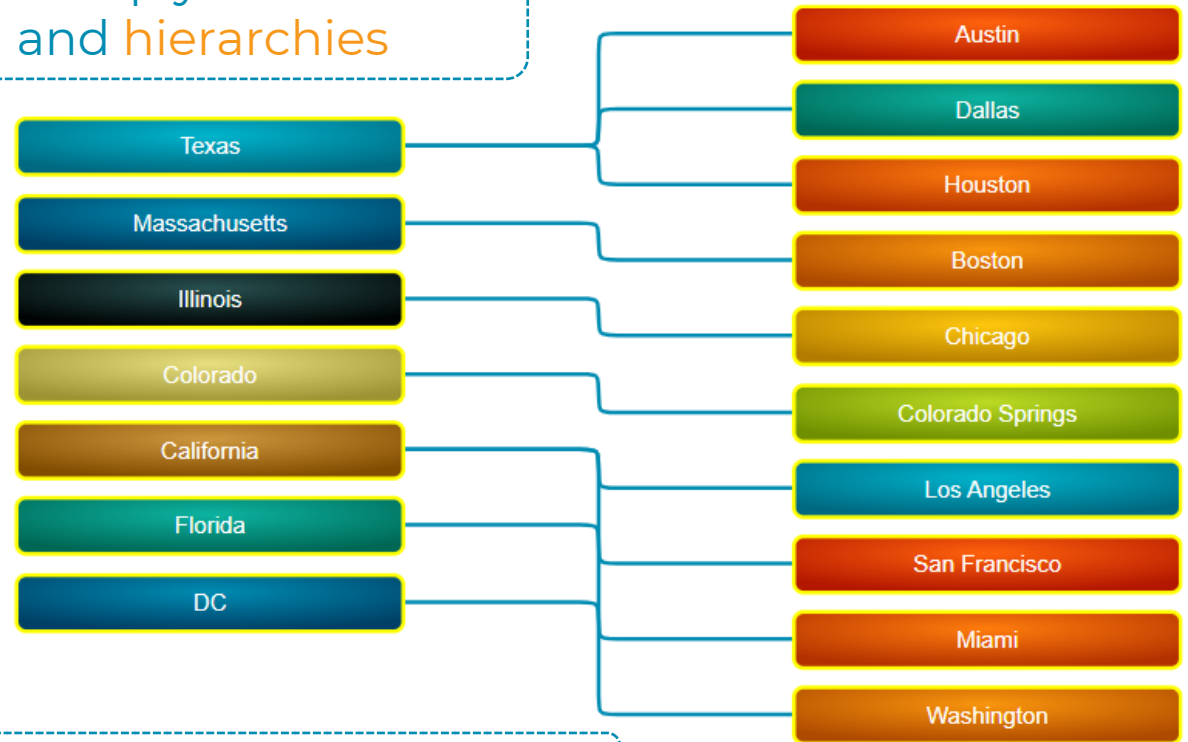


New major release = new element ! This month : the **Organizational Chart**. You will now be able to draw an organizational chart inside Webi ! This chart can obviously be used in HR dashboards but also it can also be used to display trees, hierarchies,...

Create designed Organizational Charts...

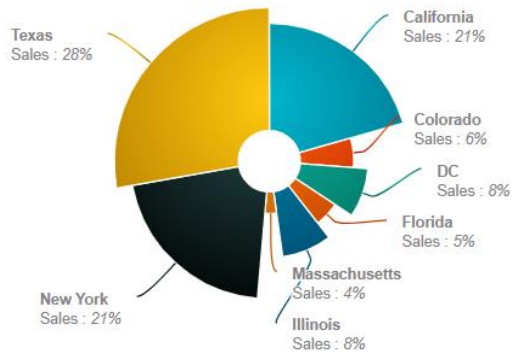


... or simply draw trees and hierarchies

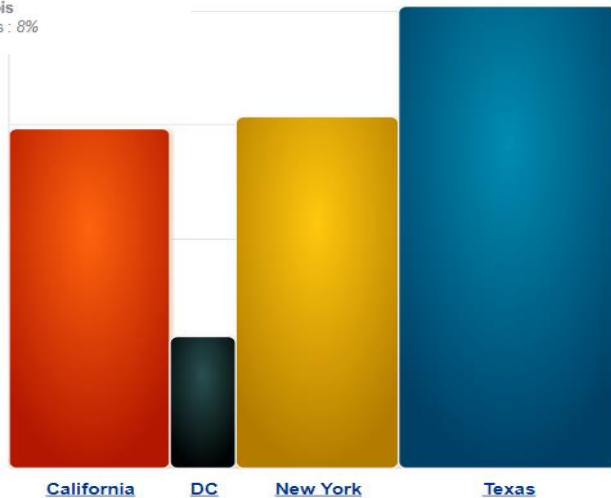


Customize each node with specific color, tooltip, icon, positioning...

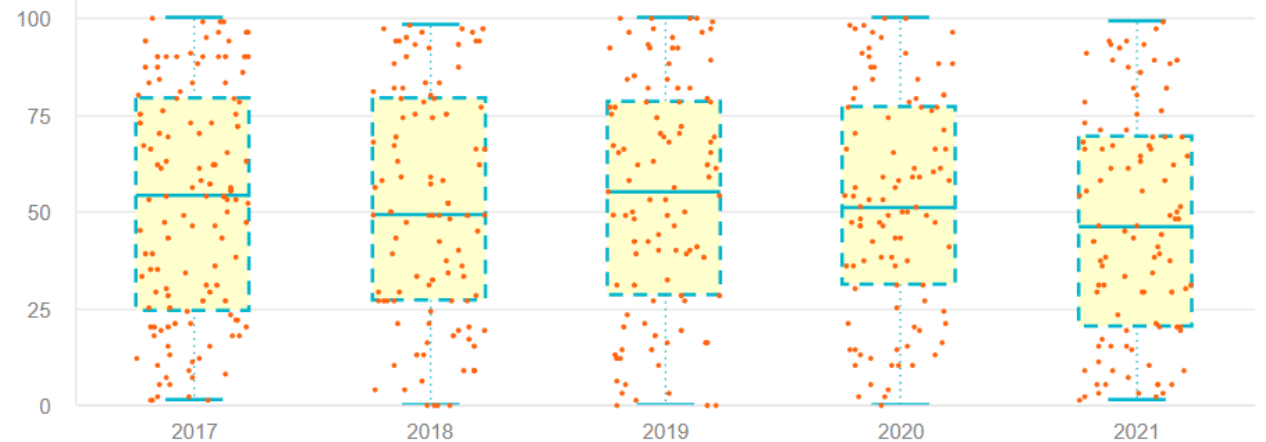
As with every new version its share of new features: **drilldown** is now available in **Variable Pie** and **Variwide** elements. **Menu button** can also be used to display **icons**. Finally a new output chart is available in **distribution chart**.



Drilldown up to 5 dimensions in **Variable Pie** & **Variwide** charts



Use icons in **Menu buttons** (instead of labels)



**Distribution chart** can now display your data in **boxplots**

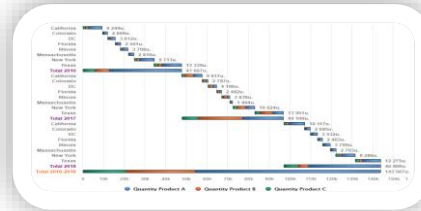
Find here the N4V roadmap for Webi.  
This forecast is likely to change depending on the needs and requests of our customers.

	2021											
Month	01	02	03	04	05	06	07	08	09	10	11	12
Major N4V 2021.			3.1			6.2			9.3			12.4
Minor N4V 2021.	1.0	2.0		4.1	5.1		7.2	8.2		10.3	11.3	

Some of future components we are working on...

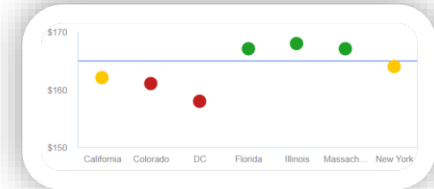
N4V 2021.3.1

Stacked waterfall



N4V 2021.9.3

Colorized bubbles gauge



2021

01

02

03

04

05

06

07

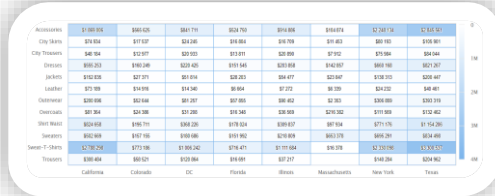
08

09

10

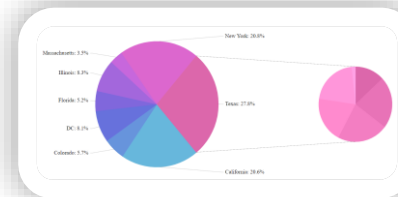
11

12



Heatmap

N4V 2021.6.2



Pie of pie

N4V 2021.12.4

Minor releases (1 / month) : bug fixes, addition of new settings or features to existing components  
Major releases (1 / quarter) : same as minor releases and addition of new component(s)



 37, rue des Mathurins  
75008 Paris  
FRANCE

 [www.need4viz.com](http://www.need4viz.com)