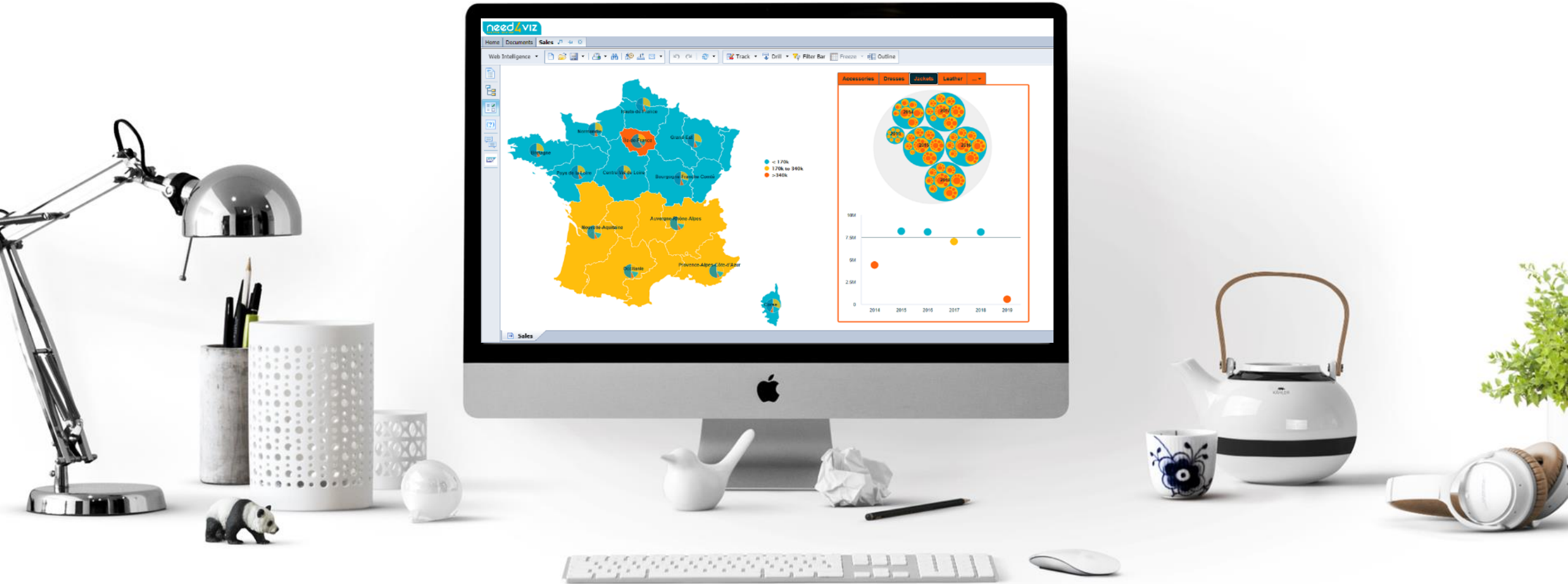




Release **2021.8.2**

What's new ?

Fast&4You

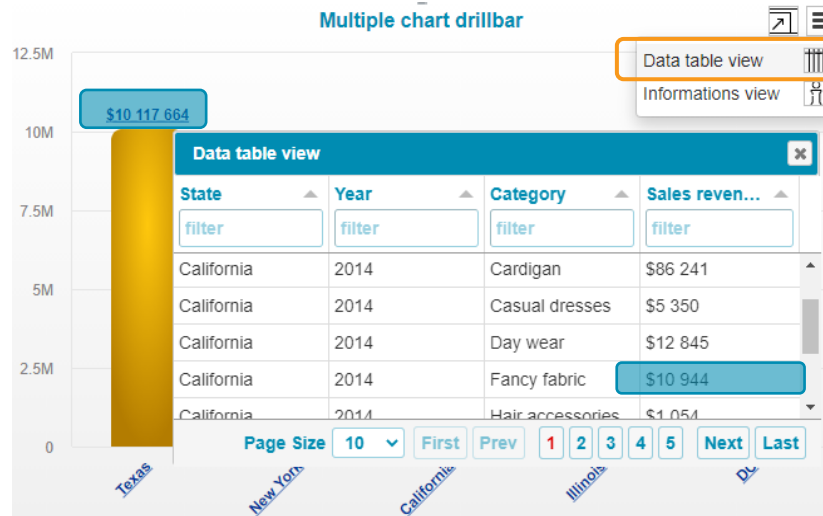


Find here some main **new features** of this release...
The full release note is available [HERE](#)

Some general enhancement have been made for the menu N4V.

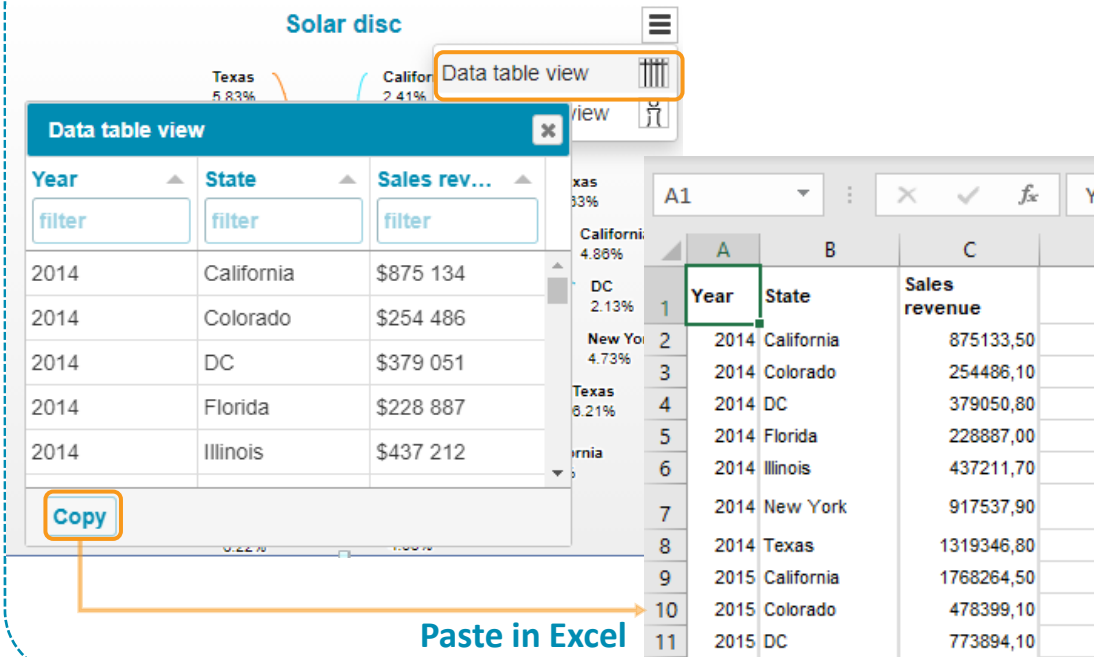
Measures format

The **formatting** defined for each measure displayed in the chart is now used in the Data Table View



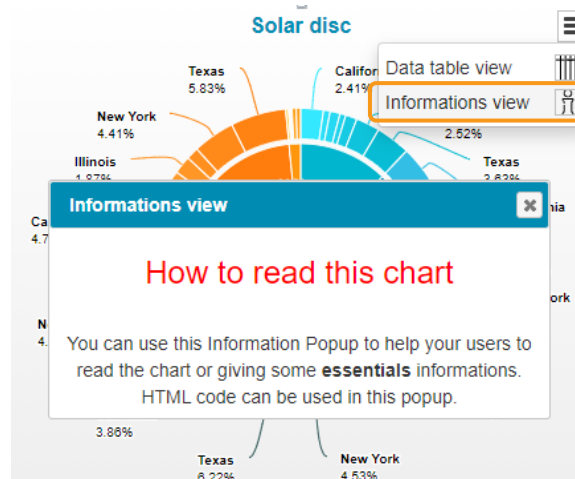
Copy/Paste data in Excel

- You can now copy/paste the **filtered data** from the Data Table View directly in Excel
- You can add a « Copy » button in the Data Table View



Information popup size

The Information popup can now be size either in % occupation of the frame or be defining a Width & Height in pixels



New enhancements have been made on **X-Axis and Y-Axis**, add, remove, change style of axis lines, grids, labels, titles... Many new options have been added to the Traffic Light gauge...

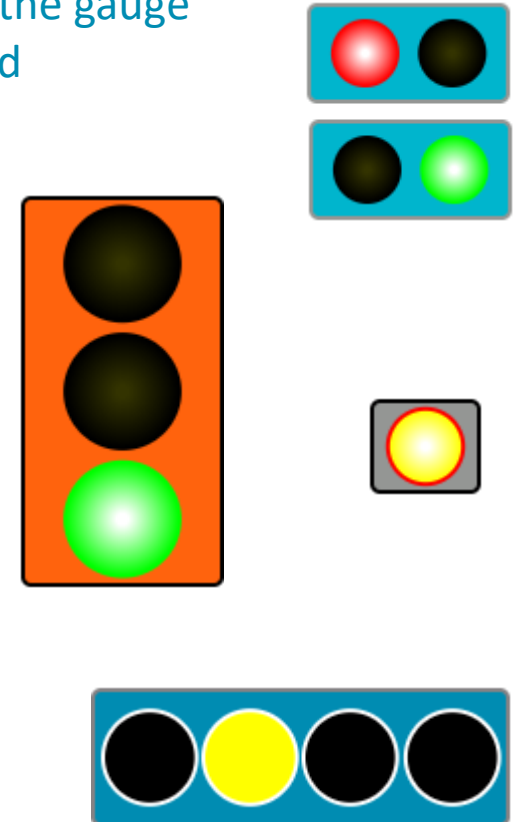


- Color & Thickness of each **grid & axis lines** can be changed
- Grid lines can be added on **X-Axis**.
- Axis **labels** can be hidden
- Axis **titles** can be changed or hidden

- Now 1 to 5 lights can be used in the gauge
- Color of each light can be defined
- Colored stroke can be added

- Animation can be changed or disabled
- Gradient color can be disabled

- Lights order can be reverted
- Traffic Light can be in horizontal or vertical position

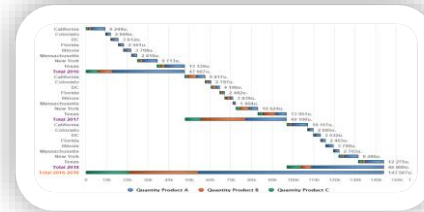


Find here the N4V roadmap for Webi.
This forecast is likely to change depending on the needs and requests of our customers.

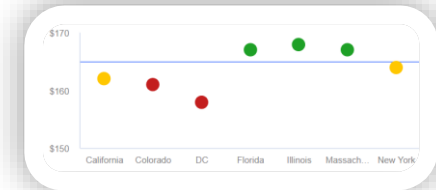
	2021											
Month	01	02	03	04	05	06	07	08	09	10	11	12
Major N4V 2021.			3.1			6.2			9.3			12.4
Minor N4V 2021.	1.0	2.0		4.1	5.1		7.2	8.2		10.3	11.3	

Some of future components we are working on...

N4V 2021.3.1



N4V 2021.9.3



2021

01

02

03

04

05

06

07

08

09

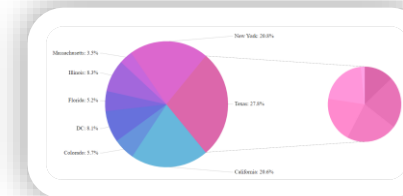
10

11

12



N4V 2021.6.2



N4V 2021.12.4

Minor releases (1 / month) : bug fixes, addition of new settings or features to existing components
Major releases (1 / quarter) : same as minor releases and addition of new component(s)



37, rue des Mathurins
75008 Paris
FRANCE



www.need4viz.com