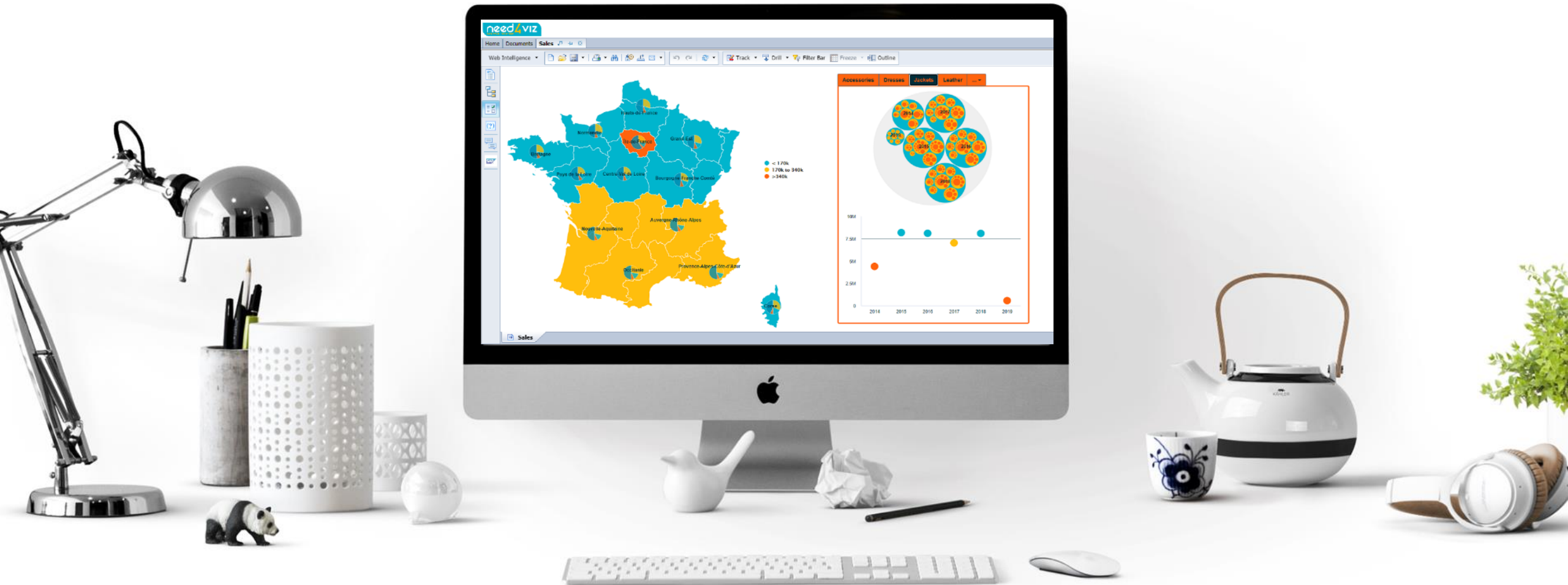




Release **2021.11.3**

What's new ?

Fast**&**4You

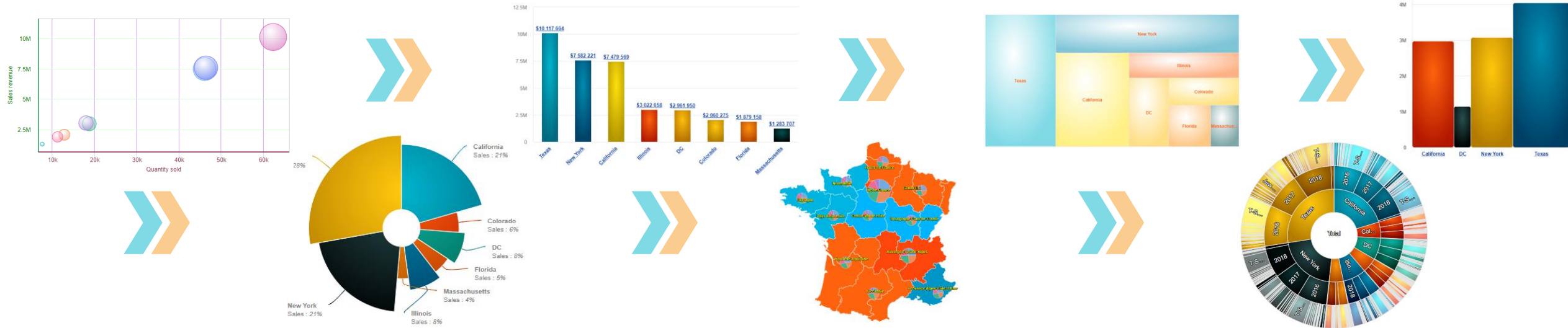


Find here some main **new features** of this release...  
The full release note is available [HERE](#)

# Drillable charts

## Stored drill & WEBI linking

Mecanism of drillable charts has been deeply improved ! Automatic saving of your last drilled level & Native WEBI linking element on each level of the drillable charts are the new powerfull features of this release.



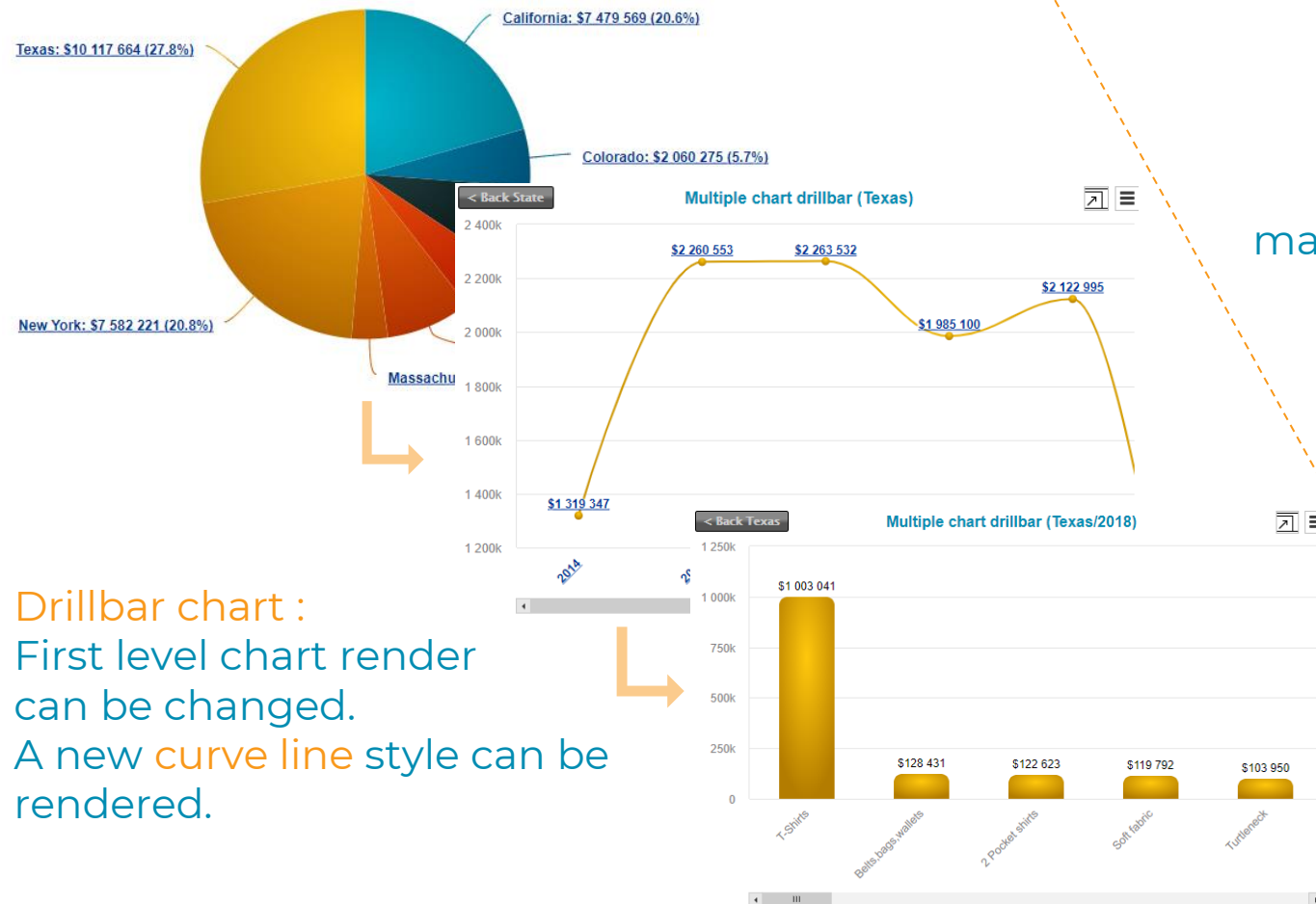
Instant saving drill level : Drill in your chart as usually then change report tab or close your report. Come back to the chart -> last level viewed is kept

Available on

- Bubble Chart
- Variable Pie
- Treemap
- Drillbar chart
- DrillMapline
- Variwide
- Sunburst

Native WEBI Linking Element : Now you can choose to filter your WEBI report on each level of drillable charts !!!

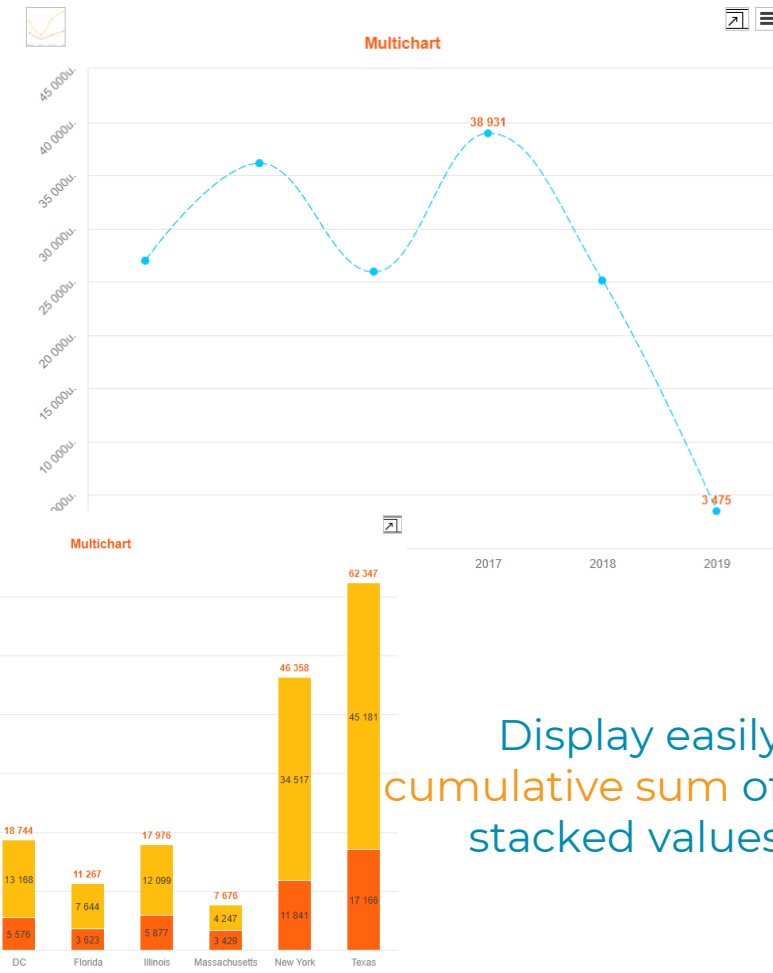
Others new features: With the **Drillbar** the first level chart renderer can be changed, go deeper with the **Multichart**, design more precisely your Trend and Progress **Tiles**.



**Drillbar chart :**  
First level chart render can be changed.  
A new **curve line** style can be rendered.

**Multichart :**

Display only min, max, first and/or last values.

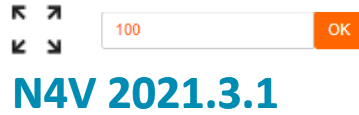


Display easily **cumulative sum** of stacked values

This forecast is likely to change depending on the needs and requests of our customers.

	2021											
Month	01	02	03	04	05	06	07	08	09	10	11	12
Major N4V 2021.			3.1			6.2			9.3			12.4
Minor N4V 2021.	1.0	2.0		4.1	5.1		7.2	8.2		10.3	11.3	

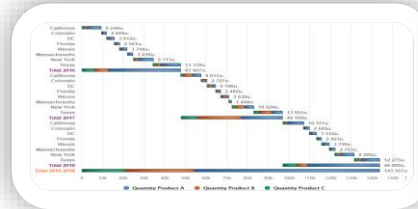
Fullscreen & Input Text



N4V 2021.3.1

Some of future components we are working on...

Stacked waterfall

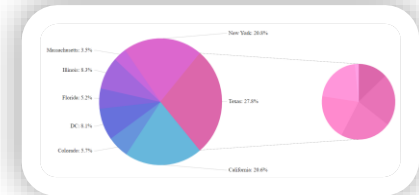


- All values
- California
- Colorado
- DC
- Florida

OK

N4V 2021.9.3

Pie of pie



2021

01

02

03

04

05

06

07

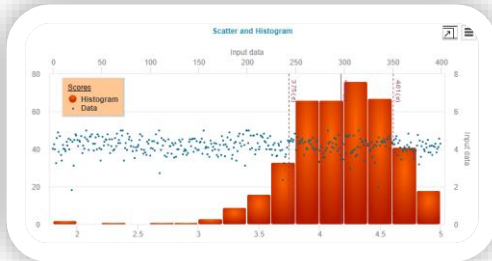
08

09

10

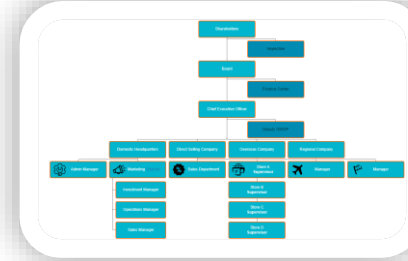
11

12



Distribution Chart

N4V 2021.6.2



Organizational Chart

N4V 2021.12.4



 37, rue des Mathurins  
75008 Paris  
FRANCE

 [www.need4viz.com](http://www.need4viz.com)